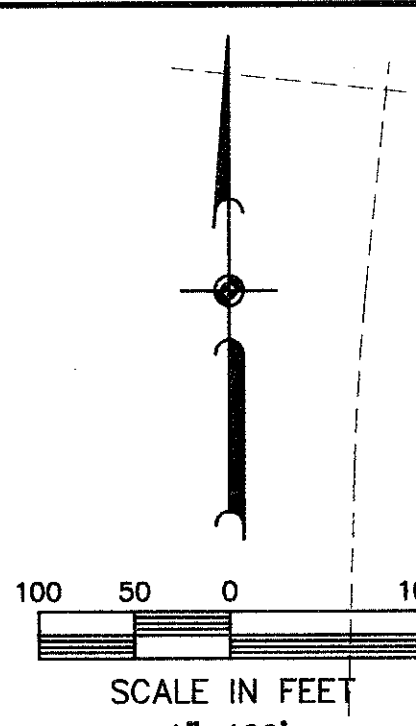
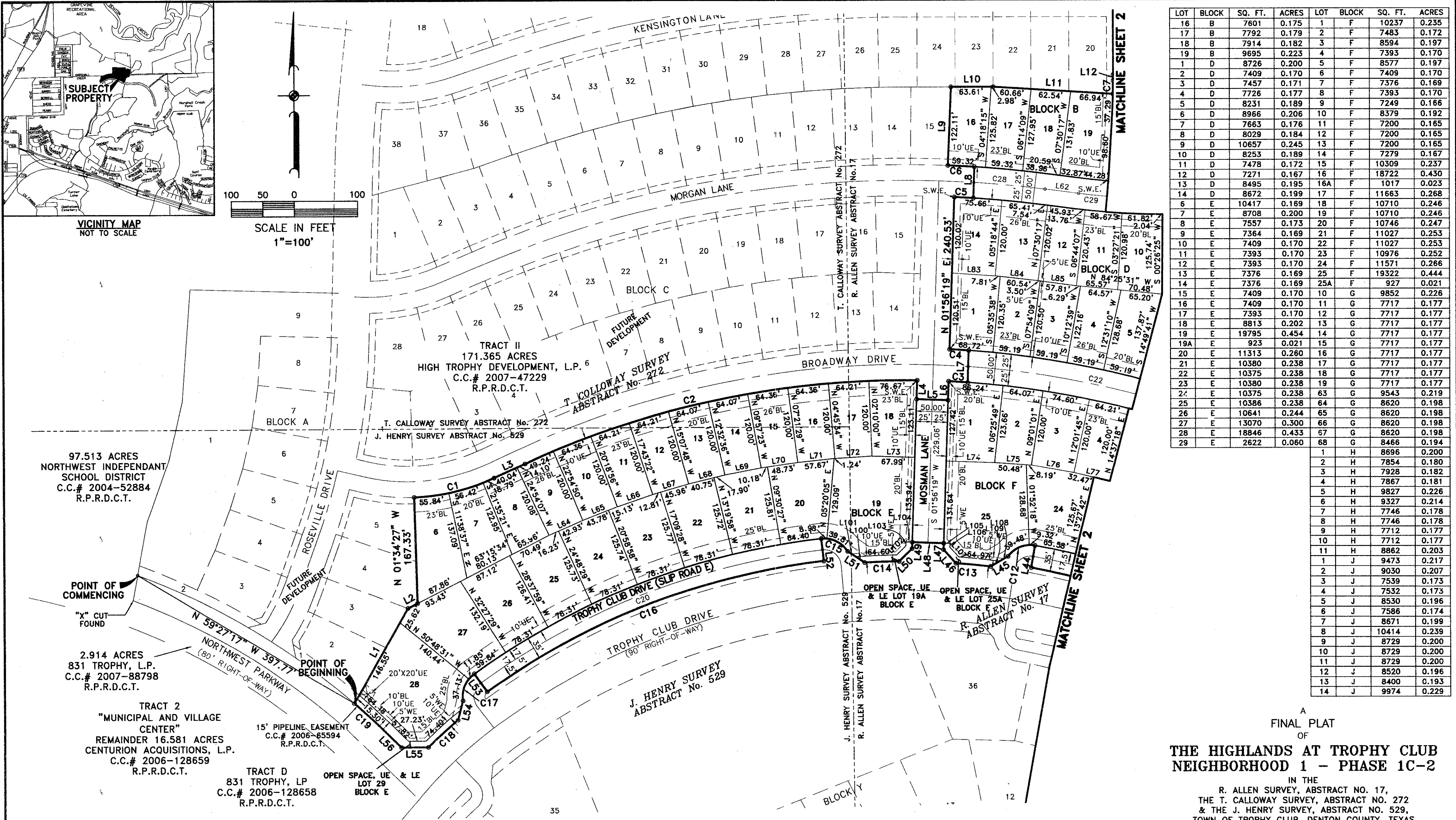


VICINITY MAP
NOT TO SCALE



SCALE IN FEET
1"=100'



LOT	BLOCK	SQ. FT.	ACRES	LOT	BLOCK	SQ. FT.	ACRES
16	B	7601	0.175	1	F	10237	0.235
17	B	7792	0.179	2	F	7483	0.172
18	B	7914	0.182	3	F	8594	0.197
19	B	9695	0.223	4	F	7393	0.170
1	D	8726	0.200	5	F	8577	0.197
2	D	7409	0.170	6	F	7409	0.170
3	D	7457	0.171	7	F	7376	0.169
4	D	7726	0.177	8	F	7393	0.170
5	D	8231	0.189	9	F	7249	0.166
6	D	8966	0.206	10	F	8379	0.192
7	D	7663	0.176	11	F	7200	0.165
8	D	8029	0.184	12	F	7200	0.165
9	D	10657	0.245	13	F	7200	0.165
10	D	8253	0.189	14	F	7279	0.167
11	D	7478	0.172	15	F	10309	0.237
12	D	7271	0.167	16	F	18722	0.430
13	D	8495	0.195	16A	F	1017	0.023
14	D	8672	0.199	17	F	11663	0.268
6	E	10417	0.169	18	F	10710	0.246
7	E	8708	0.200	19	F	10710	0.246
8	E	7557	0.173	20	F	10746	0.247
9	E	7364	0.169	21	F	11027	0.253
10	E	7409	0.170	22	F	11027	0.253
11	E	7393	0.170	23	F	10976	0.252
12	E	7393	0.170	24	F	11571	0.266
13	E	7376	0.169	25	F	19322	0.444
14	E	7376	0.169	25A	F	927	0.021
15	E	7409	0.170	10	G	9852	0.226
16	E	7409	0.170	11	G	7717	0.177
17	E	7393	0.170	12	G	7717	0.177
18	E	8813	0.202	13	G	7717	0.177
19	E	19795	0.454	14	G	7717	0.177
19A	E	923	0.021	15	G	7717	0.177
20	E	11313	0.260	16	G	7717	0.177
21	E	10380	0.238	17	G	7717	0.177
22	E	10375	0.238	18	G	7717	0.177
23	E	10380	0.238	19	G	7717	0.177
24	E	10375	0.238	63	G	9543	0.219
25	E	10386	0.238	64	G	8620	0.198
26	E	10641	0.244	65	G	8620	0.198
27	E	13070	0.300	66	G	8620	0.198
28	E	18846	0.433	67	G	8620	0.198
29	E	2622	0.060	68	G	8466	0.194
1	H	8696	0.200				
2	H	7854	0.180				
3	H	7928	0.182				
4	H	7867	0.181				
5	H	9827	0.226				
6	H	9327	0.214				
7	H	7746	0.178				
8	H	7746	0.178				
9	H	7712	0.177				
10	H	7712	0.177				
11	H	8862	0.203				
1	J	9473	0.217				
2	J	9030	0.207				
3	J	7539	0.173				
4	J	7532	0.173				
5	J	8530	0.196				
6	J	7586	0.174				
7	J	8671	0.199				
8	J	10414	0.239				
9	J	8729	0.200				
10	J	8729	0.200				
11	J	8729	0.200				
12	J	8520	0.196				
13	J	8400	0.193				
14	J	9974	0.229				

FINAL PLAT
OF
**THE HIGHLANDS AT TROPHY CLUB
NEIGHBORHOOD 1 - PHASE 1C-2**

IN THE
R. ALLEN SURVEY, ABSTRACT NO. 17,
THE T. CALLOWAY SURVEY, ABSTRACT NO. 272
& THE J. HENRY SURVEY, ABSTRACT NO. 529,
TOWN OF TROPHY CLUB, DENTON COUNTY, TEXAS
107 RESIDENTIAL LOTS
4 OPEN SPACE LOTS
28.144 ACRES

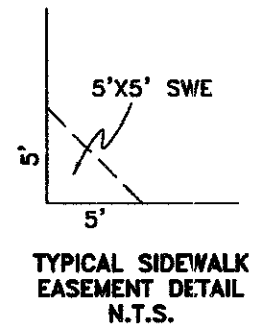
LEGEND

IRF	IRON ROD FOUND
CIRF	IRON ROD FOUND WITH PLASTIC CAP
CIRS	5/8" IRON ROD SET WITH YELLOW PLASTIC CAP STAMPED "CARTER & BURGESS"
R.P.R.D.C.T.	REAL PROPERTY RECORDS, DENTON COUNTY, TEXAS
P.R.D.C.T.	PLAT RECORDS, DENTON COUNTY, TEXAS
S.W.E.	SIDE WALK EASEMENT
U.E.	UTILITY EASEMENT
D.E.	DRAINAGE EASEMENT
W.E.	WALL EASEMENT
L.E.	LANDSCAPE EASEMENT
BL	BUILDING LINE
SQ.FT.	SQUARE FEET
—	STREET NAME CHANGE

PHASE 1C-2

BLOCK/LOT	LOT TYPE	NUMBER
E/19,28, F/16,25	1	4
E/20-27, F/17-24	2	16
G/63-68 J/8-14	3	13
B/16-19, D/1-14, E/6-18, F/1-15, G/10-19 H/1-11, J/1-7	4	74

- NOTES:**
- REFERENCE BEARING BASIS BEING GRID NORTH, TEXAS STATE PLANE COORDINATES, NORTH CENTRAL ZONE NAD83, (CORS96, EPOCH DATE 2002), DETERMINED BY GPS OBSERVATIONS ON JULIAN DAY 213, 2006 CALCULATED FROM ARLINGTON RRP2 CORS ARP (PID-DF5387), SAGINAW TX CORS ARP (PID-DH7149) AND DENTON CORS ARP (PID-DF8986),
 - ALL CORNERS ARE MONUMENTED WITH A 5/8" IRON ROD WITH YELLOW PLASTIC CAP STAMPED "CARTER BURGESS" SET, UNLESS OTHERWISE NOTED.
 - THE TOWN OR THE MUD, AS APPLICABLE, SHALL ISSUE NO PERMIT UNTIL THE COMPLETION OF ALL DEDICATED IMPROVEMENTS AND ACCEPTANCE OF SUCH IMPROVEMENTS ASSOCIATED WITH THE SUBDIVISION ARE APPROVED BY THE TOWN.
 - SHOULD THE ENTITY RESPONSIBLE FOR MAINTENANCE OF COMMON HELD PROPERTY FAIL TO PERFORM THE FUNCTION, THE TOWN HAS THE AUTHORITY TO PROVIDE APPROPRIATE MAINTENANCE AND REPAIR AND COLLECT APPROPRIATE FEES AND REIMBURSEMENTS.
 - OPEN SPACE LOTS: LOT 19A & LOT 29 BLOCK E; LOT 16A & LOT 25 A, BLOCK F; ARE NON-BUILDABLE LOTS



TYPICAL SIDEWALK EASEMENT DETAIL
N.T.S.

OWNER: HIGH TROPHY DEVELOPMENT, L.P.
3901 W. AIRPORT FREEWAY
SUITE 200
BEDFORD, TX. 76021
817-391-2500

ENGINEER/SURVEYOR: **Carter & Burgess**
CARTER & BURGESS, INC.
7950 ELMBROOK DRIVE, SUITE 250
DALLAS, TX 75247-4981
(214) 836-0145

Filed for Record in:
Denton County
On: Apr 16, 2008 at 12:00A

As a
Plat

Document Number: 40316
Amount: 172.00

Receipt Number - 477037
By:
Karen Dean

THE HIGHLANDS AT TROPHY CLUB NEIGHBORHOOD 1 - PHASE 1C-2