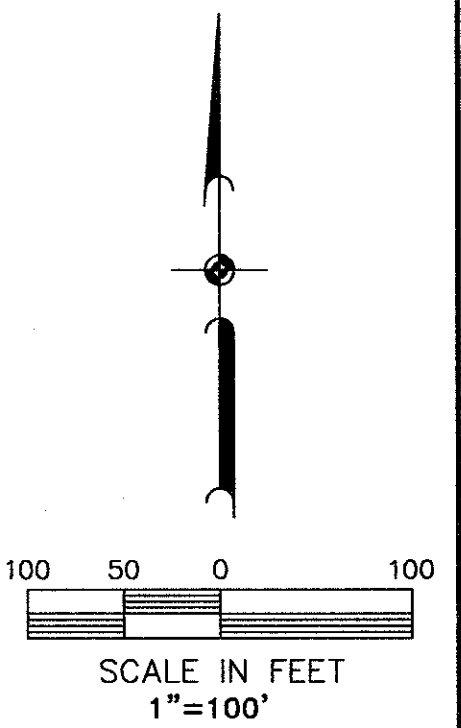
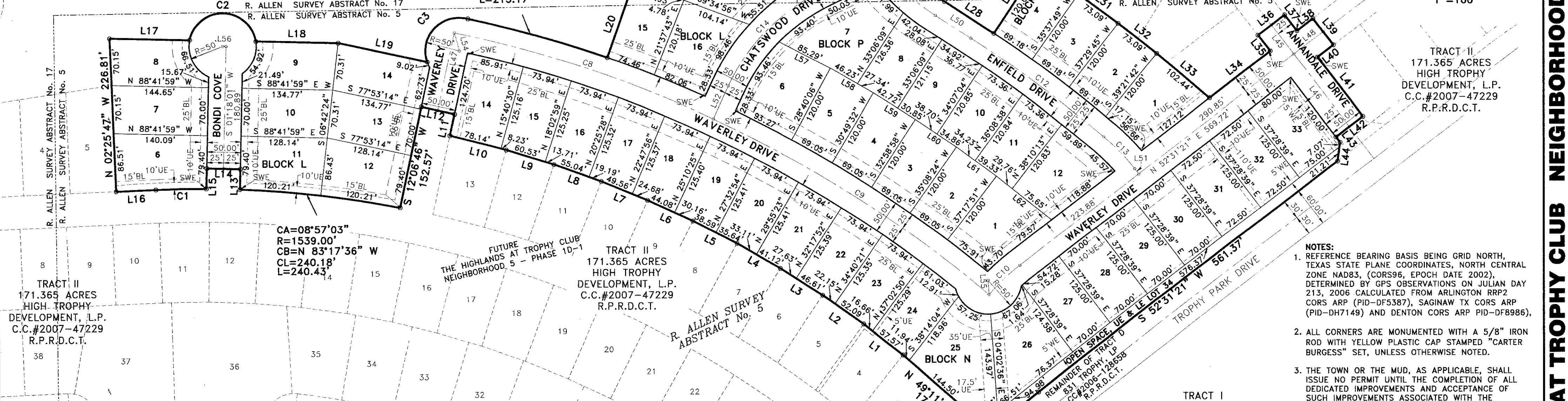


VICINITY MAP
NOT TO SCALE



LINE	BEARING	DISTANCE	LINE	BEARING	DISTANCE
L1	N 52°14'47" W	74.24'	L27	S 44°31'21" E	50.00'
L2	N 54°48'37" W	74.24'	L28	S 56°48'17" E	87.54'
L3	N 57°22'28" W	74.24'	L29	N 33°45'52" E	120.00'
L4	N 59°56'19" W	74.24'	L30	S 55°18'10" E	73.09'
L5	N 62°30'09" W	74.24'	L31	S 53°26'13" E	73.09'
L6	N 65°04'00" W	74.24'	L32	S 51°34'16" E	73.09'
L7	N 67°37'51" W	74.24'	L33	S 49°42'20" E	102.44'
L8	N 70°11'41" W	74.24'	L34	N 52°31'21" E	114.09'
L9	N 72°45'32" W	74.24'	L35	N 37°28'39" W	30.00'
L10	N 75°19'23" W	86.37'	L36	N 52°31'21" E	50.00'
L11	N 12°06'46" E	32.24'	L37	S 37°28'39" E	30.00'
L12	N 77°53'14" W	50.00'	L38	N 52°31'21" E	30.00'
L13	N 01°18'01" E	30.00'	L39	S 37°28'39" E	50.00'
L14	N 88°41'59" W	50.00'	L40	S 52°31'21" W	30.00'
L15	S 01°18'01" W	30.00'	L41	S 37°28'39" E	110.00'
L16	S 87°34'13" W	59.46'	L42	S 52°31'21" W	50.00'
L17	S 88°41'59" E	119.94'	L43	S 37°28'39" E	10.00'
L18	S 88°41'59" E	122.12'	L44	S 07°31'21" W	28.28'
L19	S 77°53'14" E	136.07'	L45	S 37°28'39" E	55.00'
L20	N 19°18'10" E	97.71'	L46	S 37°28'39" E	135.00'
L21	N 43°02'46" E	19.11'	L47	N 12°06'46" E	117.63'
L22	S 73°39'55" E	43.01'	L48	N 52°31'21" E	55.00'
L23	N 46°24'09" E	127.09'	L49	S 34°39'54" E	2.03'
L24	N 57°50'00" E	88.63'	L50	S 56°53'51" E	63.00'
L25	N 63°15'33" E	68.09'	L51	S 37°28'39" E	9.63'
L26	S 31°45'49" E	120.00'	L52	N 24°58'24" E	53.16'

LOT	BLOCK	SQ. FT.	ACRES	LOT	BLOCK	SQ. FT.	ACRES
6	L	11307	0.260	26	N	11988	0.275
7	L	9966	0.229	27	N	8748	0.201
8	L	9041	0.208	28	N	8750	0.201
9	L	8938	0.205	29	N	8750	0.201
10	L	9202	0.211	30	N	8750	0.201
11	L	10183	0.234	31	N	9063	0.208
12	L	10183	0.234	32	N	9063	0.208
13	L	9202	0.211	33	N	9987	0.229
14	L	9645	0.221	34	N	9935	0.228
15	L	8954	0.206	1	P	10727	0.246
16	L	10893	0.250	2	P	8540	0.196
17	L	10701	0.246	3	P	8540	0.196
18	L	9086	0.209	4	P	8540	0.196
19	L	8863	0.203	5	P	8540	0.196
14	N	10271	0.236	6	P	11169	0.256
15	N	8938	0.205	7	P	13950	0.320
16	N	8937	0.205	8	P	8584	0.197
17	N	8937	0.205	9	P	8529	0.196
18	N	8937	0.205	10	P	8599	0.197
19	N	8937	0.205	11	P	8599	0.197
20	N	8937	0.205	12	P	10881	0.250
21	N	8937	0.205	1	Q	10681	0.245
22	N	8937	0.205	2	Q	8522	0.196
23	N	8937	0.205	3	Q	8522	0.196
24	N	8831	0.203	4	Q	8522	0.196
25	N	13953	0.320				

CURVE	CENTRAL ANGLE	RADIUS	ARC LENGTH	CHORD BEARING	CHORD LENGTH
C1	2°47'59"	1539.00'	75.20'	S 88°58'11" W	75.19'
C2	160°24'15"	50.00'	139.98'	S 88°41'59" E	98.54'
C3	123°54'10"	50.00'	108.13'	N 42°59'40" E	88.25'
C4	12°45'32"	275.00'	61.24'	N 51°51'25" E	61.11'
C5	5°17'27"	325.00'	30.01'	S 48°07'22" W	30.00'
C6	17°39'26"	275.00'	84.75'	S 48°04'08" E	84.41'
C7	2°34'52"	2040.02'	91.89'	S 51°13'56" W	91.89'
C8	12°51'38"	1809.00'	406.04'	S 71°27'25" E	405.19'
C9	15°26'48"	1809.00'	487.70'	S 57°18'12" E	486.22'
C10	12°05'10"	300.00'	63.28'	N 46°28'46" E	63.17'
C11	22°13'57"	300.00'	116.41'	S 45°46'53" E	115.68'
C12	6°43'19"	2099.50'	246.31'	S 53°32'12" E	246.17'
C13	12°41'54"	300.00'	66.49'	S 43°49'36" E	66.35'
C14	38°55'50"	300.00'	203.84'	N 44°26'19" E	199.94'
C15	8°34'08"	300.00'	44.87'	N 59°37'09" E	44.82'
C16	9°51'27"	300.00'	51.61'	N 50°24'22" E	51.55'

LEGEND

IRF IRON ROD FOUND
 CIRF IRON ROD FOUND WITH PLASTIC CAP
 CIRS 5/8" IRON ROD SET WITH YELLOW PLASTIC CAP STAMPED "CARTER & BURGESS"
 R.P.R.D.C.T. REAL PROPERTY RECORDS, DENTON COUNTY, TEXAS
 P.R.D.C.T. PLAT RECORDS, DENTON COUNTY, TEXAS
 S.W.E. SIDE WALK EASEMENT
 U.E. UTILITY EASEMENT
 D.E. DRAINAGE EASEMENT
 W.E. WALL EASEMENT
 L.E. LANDSCAPE EASEMENT
 BL BUILDING LINE
 SQ.FT. SQUARE FEET
 STREET NAME CHANGE

PHASE 1D-2		
BLOCK/LOT	LOT TYPE	NUMBER
L/6-19, N/14-33, P/1-12, Q/1-4	3	50

OWNER/DEVELOPER: HIGH TROPHY DEVELOPMENT, L.P.
 3901 WEST AIRPORT FREEWAY SUITE 200
 BEDFORD, TEXAS 76021
 ATTN: BRADLEY BIBER

ENGINEER/SURVEYOR: **Carter & Burgess**
 CARTER & BURGESS, INC.
 7950 ELMBROOK DRIVE, SUITE 250
 DALLAS, TX 75247-4961
 (214) 638-0145

- NOTES:**
- REFERENCE BEARING BASIS BEING GRID NORTH, TEXAS STATE PLANE COORDINATES, NORTH CENTRAL ZONE NAD83, (CORS96, EPOCH DATE 2002), DETERMINED BY GPS OBSERVATIONS ON JULIAN DAY 213, 2006 CALCULATED FROM ARLINGTON RRP2 CORS ARP (PID-DF5387), SAGINAW TX CORS ARP (PID-DH7149) AND DENTON CORS ARP PID-DF8986).
 - ALL CORNERS ARE MONUMENTED WITH A 5/8" IRON ROD WITH YELLOW PLASTIC CAP STAMPED "CARTER BURGESS" SET, UNLESS OTHERWISE NOTED.
 - THE TOWN OR THE MUD, AS APPLICABLE, SHALL ISSUE NO PERMIT UNTIL THE COMPLETION OF ALL DEDICATED IMPROVEMENTS AND ACCEPTANCE OF SUCH IMPROVEMENTS ASSOCIATED WITH THE SUBDIVISION ARE APPROVED BY THE TOWN.
 - SHOULD THE ENTITY RESPONSIBLE FOR MAINTENANCE OF COMMON HELD PROPERTY FAIL TO PERFORM THE FUNCTION, THE TOWN HAS THE AUTHORITY TO PROVIDE APPROPRIATE MAINTENANCE AND REPAIR AND COLLECT APPROPRIATE FEES AND REIMBURSEMENTS.
 - OPEN SPACE LOTS: LOT 34, BLOCK N, IS A NON-BUILDABLE LOT.

A
 FINAL PLAT
 OF
**THE HIGHLANDS AT TROPHY CLUB
 NEIGHBORHOOD 5 - PHASE 1D-2**
 IN THE
 R. ALLEN SURVEY, ABSTRACT NO. 5
 & R. ALLEN SURVEY, ABSTRACT NO. 17,
 & T. ALLEN SURVEY, ABSTRACT NO. 7,
 TOWN OF TROPHY CLUB, DENTON COUNTY, TEXAS

**50 RESIDENTIAL LOTS &
 1 OPEN SPACE LOT**
 14.523 ACRES

Filed for Record in:
 Denton County

On: Apr 16, 2008 at 12:00A

As a
 Plat

Document Number: 40311

Amount: \$4,900

Receipt Number: 477635